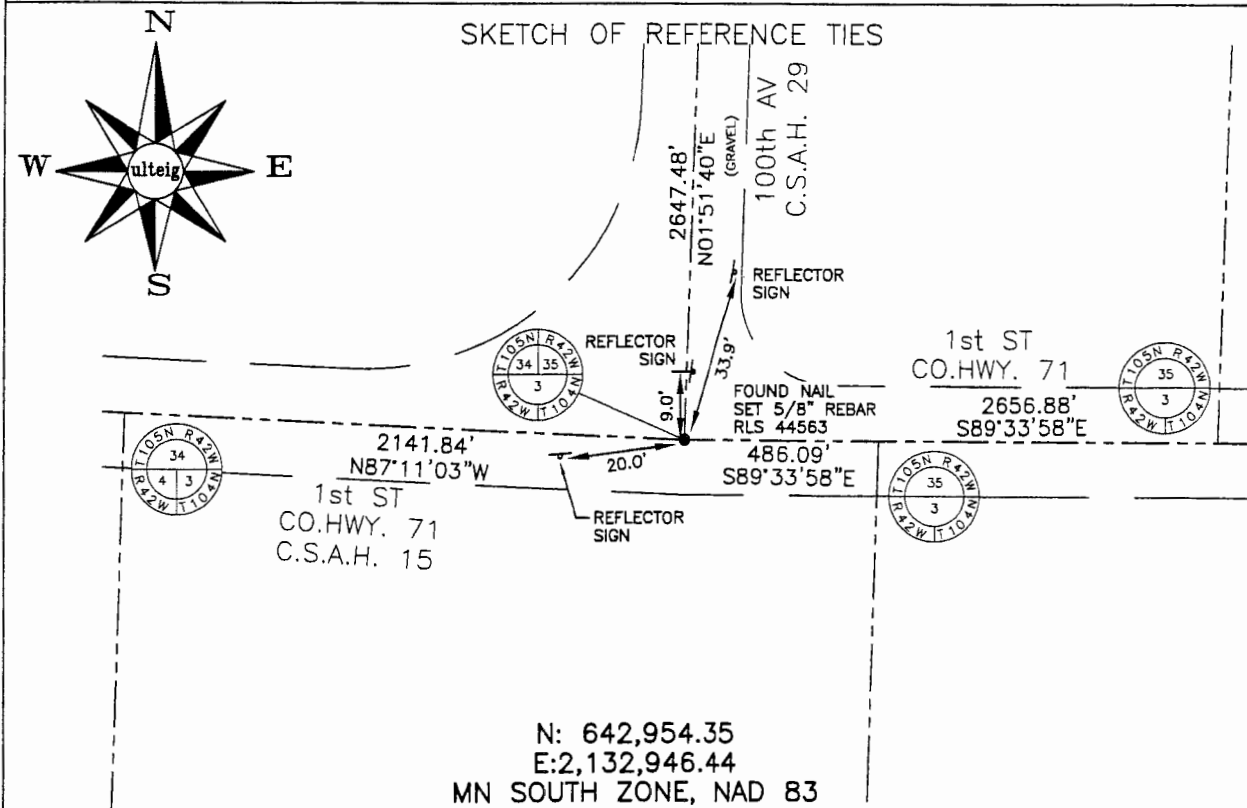


CERTIFICATE OF LOCATION OF GOVERNMENT CORNER

SOUTHWEST Corner of Section 35, Township 105N, Range 42W, 5th P.M.
 STATE OF MINNESOTA, County of MURRAY

At the corner location shown on the sketch:

- On 03/06/2006 found a NAIL IN THE GRAVEL ROADS.
DATE
- left monument as found, lowered monument, removed monument (explain)
- On 03/06/2006 placed a 5/8" REBAR WITH CAP: RLS 44563
DATE



NOT TO SCALE

BEARING SYSTEM IS BASED ON MN STATE PLANE COORDINATE SYSTEM, SOUTH ZONE, 1983 NAD.

Statement of evidence relative to this corner location is on back of page.

I hereby certify that this document and the data contained herein was prepared by me or under my direct supervision.

Thomas V. Zeff 9/27/06
Thomas V. Zeff DATE

Registration No. 44563

- Land Surveyor, Professional Engineer
- County Surveyor, County Engineer

OFFICE OF THE COUNTY RECORDER

County of _____

I hereby certify that this document was filed in the Co. Recorders office at _____ .M. on the _____ day of SEP 29 2006 A.D., 20____

County Recorder Janna V. Johnson
 By _____, Deputy

DOCUMENT NO. _____

STATEMENT OF EVIDENCE:

SOUTHWEST CORNER, SECTION 35, T.105N., R.42W.,
MURRAY COUNTY, MINNESOTA

06/22/1861 W.J. NIELY, U.S. DEPUTY SURVEYOR, SOUTH TOWNSHIP LINE

05/25/1901 MURRAY CO. HIGHWAY DEPT. RECORDS: 8"x10"x14" STONE
SET IN GRADE

09/25/1930 MURRAY CO. HIGHWAY DEPT. 4 TIES TO FENCE CORNERS

? Date MURRAY CO HIGHWAY DEPT. CORNER FOUND, AT STA 21+41.1.

03/06/2006 ULTEIG ENGINEERS, INC. SURVEY CREW, BRIAN PAYNE PARTY CHIEF
FOUND A NAIL; SET A 5/8" REBAR WITH CAP: RLS 44563 AT 1/4
CORNER SO AS TO BE IN HARMONY WITH RETRACEMENT OF CORNER
BY MURRAY CO. HIGHWAY DEPT.
TIES: SW-20.0' TO "REFLECTOR SIGN" POST;
N-9.0' TO "REFLECTOR SIGN" POST
NE-33.9' TO "REFLECTOR SIGN" POST;
N-2647.48' TO W 1/4 CORNER, SECTION 35;
E-486.09' TO N 1/4 CORNER, SECTION 3, T104N.
E-2656.88' TO S 1/4 CORNER, SECTION 35;
W-2141.84' TO NW CORNER, SECTION 3, T104N.